

CURRENT MODE PWM+PFM CONTROLLER WITH BUILT-IN HIGH VOLTAGE MOSFET

1. DESCRIPTION

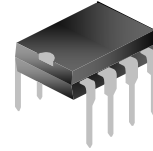
SD6834 is current mode PWM+PFM controller with built-in high-voltage MOSFET used for SMPS.

It features low standby power and low start current. In standby mode, the circuit enters burst mode to reduce the standby power dissipation.

The switch frequency is 25~67kHz decided by the load with jitter frequency for low EMI.

Built-in peak current compensation circuit makes the limit peak current stable even with different input AC voltage. Maximum peak current compensation during power-on reduces pressure on transformer to avoid saturation, the peak current compensation will decrease for balance after power-on. Limit output current can be adjusted through the resistor connected to CS.

It integrates various protections such as undervoltage lockout, overvoltage protection, overload protection, leading edge blanking, primary winding overcurrent protection and thermal shutdown. The circuit will restart until normal if protection occurs.



DIP-8-300-2.54

2. APPLICATIONS

- ◆ SMPS

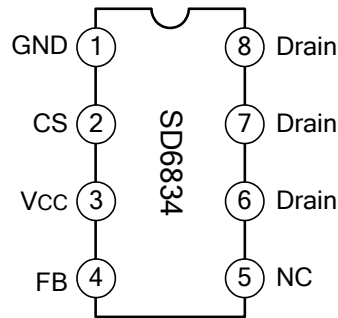
3. FEATURES

- Energy Star 2.0 standard
- Lower start-up current (3μA)
- Various switching frequency following load for the high efficiency
- Frequency jitter for low EMI
- Overvoltage, primary winding overcurrent, overload and over temperature protections.
- External peak current sense resistor
- Undervoltage lockout
- Built-in high voltage MOSFET
- Auto restart mode
- Peak current compensation
- Maximum peak current compensation for initialization to realize the soft start function.
- Burst mode
- Cycle by cycle current limit

4. ORDERING INFORMATION

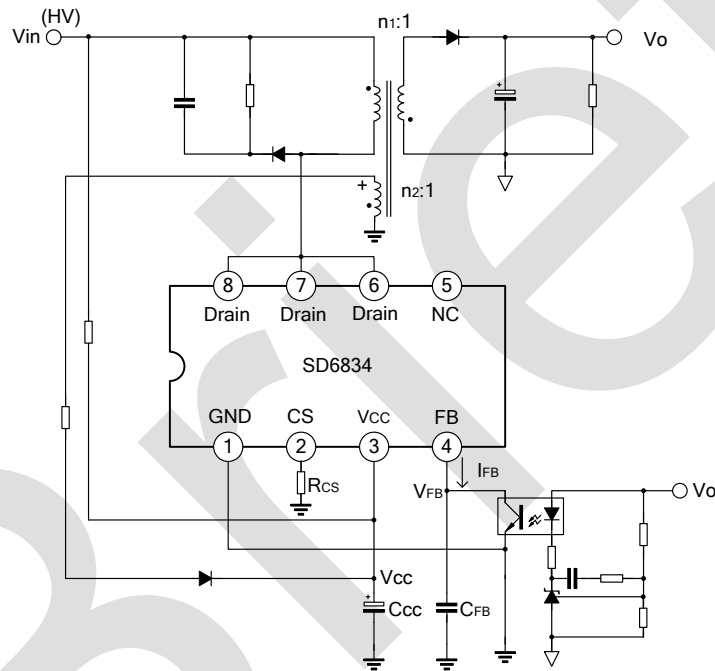
Part No.	Package	Marking	Hazardous Substance Control	Packing Type
SD6834	DIP-8-300-2.54	SD6834	Halogen free	Tube

5. PIN CONFIGURATION



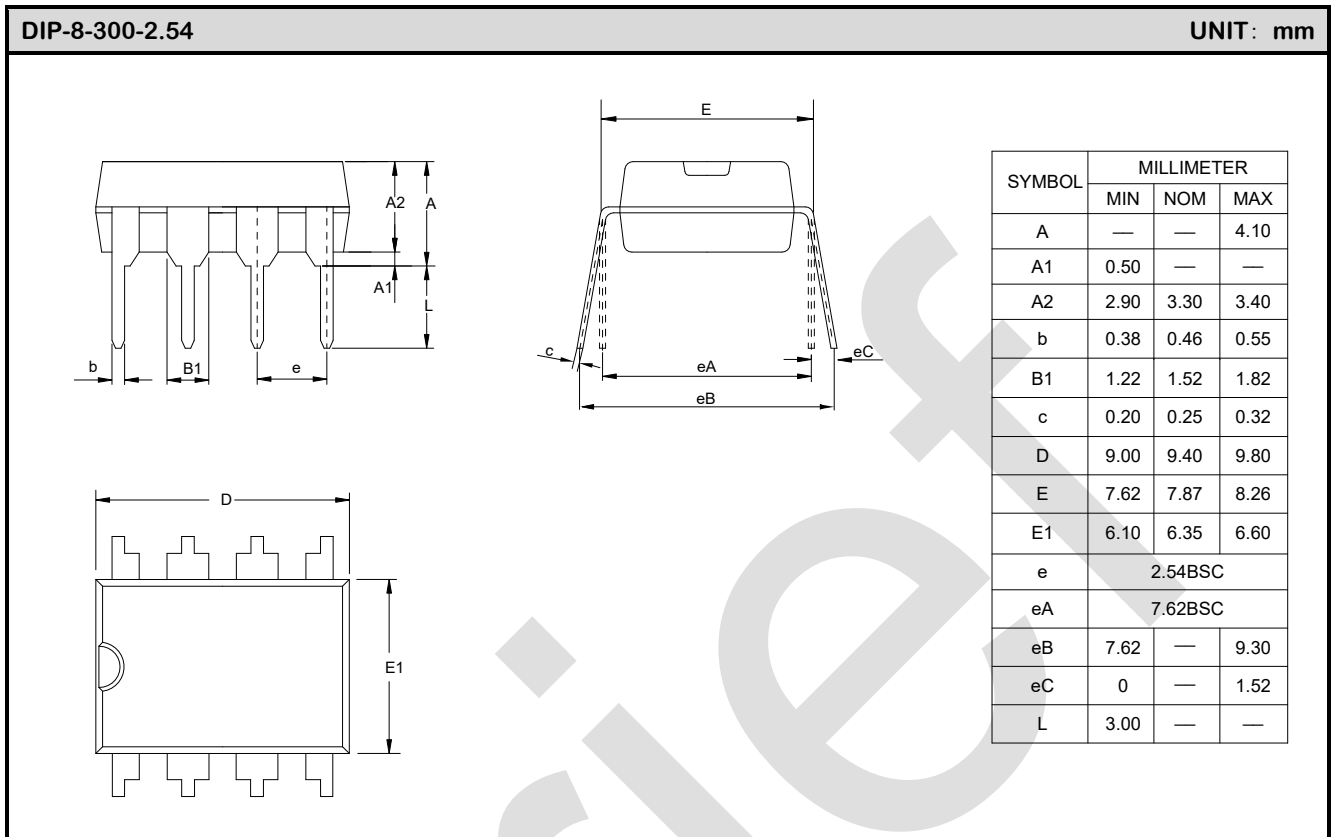
Note: it is recommended to connect pin 5 to pin Drain for better heat dissipation.

6. TYPICAL APPLICATION CIRCUIT



Note: The circuit and parameters are for reference only, please set the parameters of the real application circuit based on the real test.

7. PACKAGE OUTLINE



Important notice :

1. The instructions are subject to change without notice!
2. Customers should obtain the latest relevant information before placing orders and should verify that such information is complete and current. Please read the instructions carefully before using our products, including the circuit operation precautions.
3. Our products are consumer electronic products or the other civil electronic products.
4. When using our products, please do not exceed the maximum rating of the products, otherwise the reliability of the whole machine will be affected. There is a certain possibility of failure or malfunction of any semiconductor product under specific conditions. The buyer is responsible for complying with safety standards and taking safety measures when using our products for system design, sample and whole machine manufacturing, so as to avoid potential failure risk that may cause personal injury or property loss.
5. It is strongly recommended to identify the trademark when buying our products. Please contact us if there is any question.
6. Product promotion is endless, our company will wholeheartedly provide customers with better products!
7. Website: <http://www.silan.com.cn>